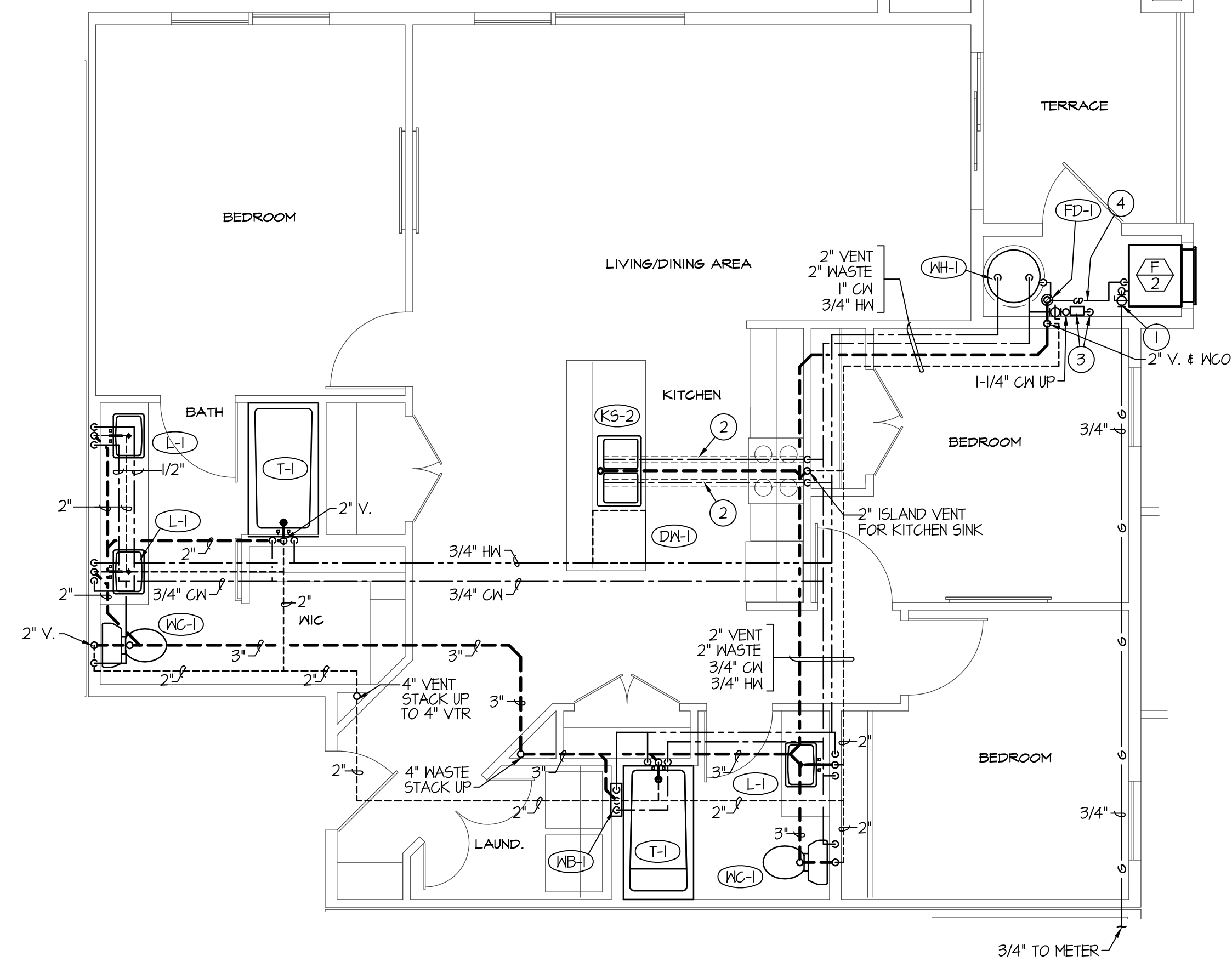
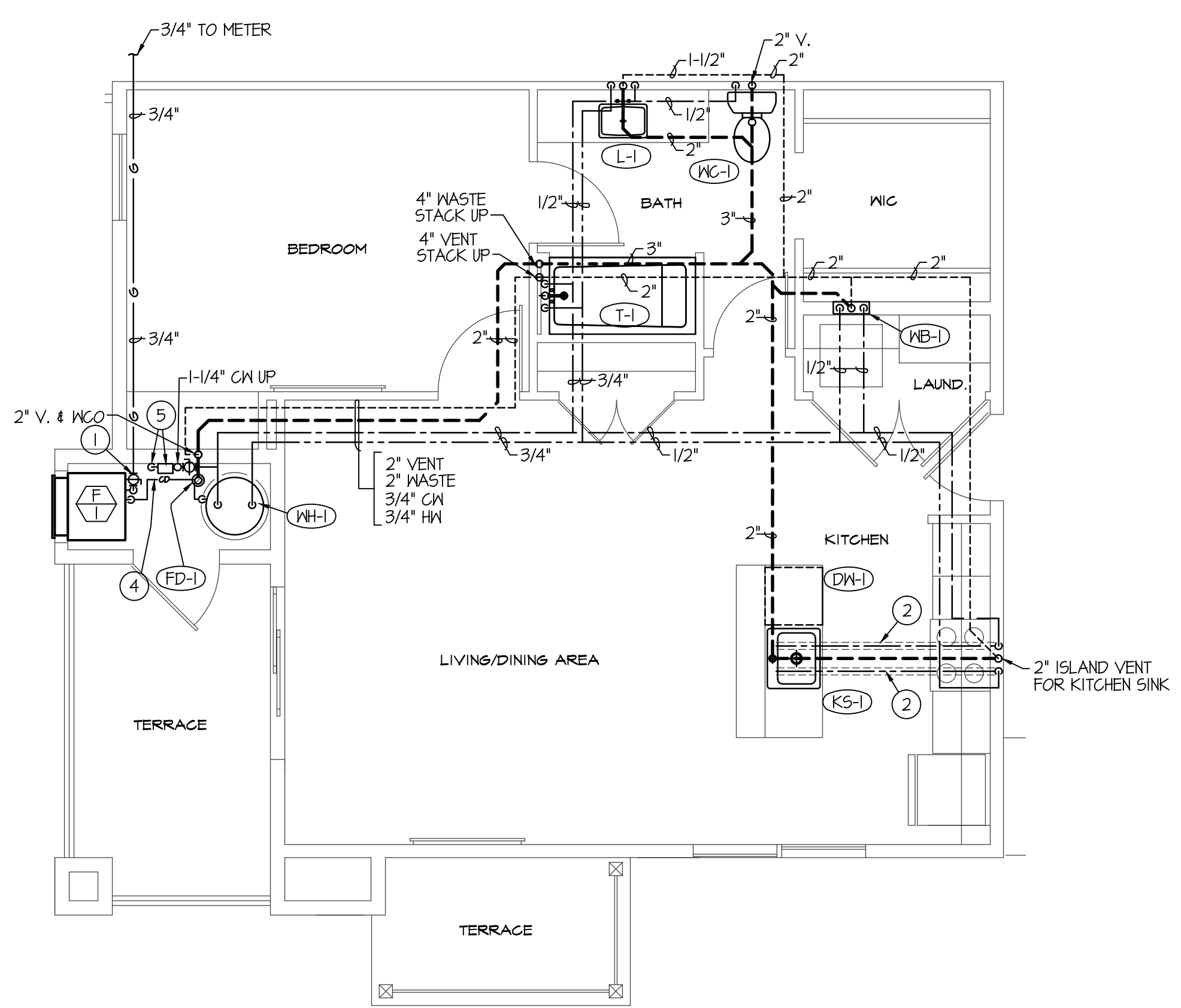


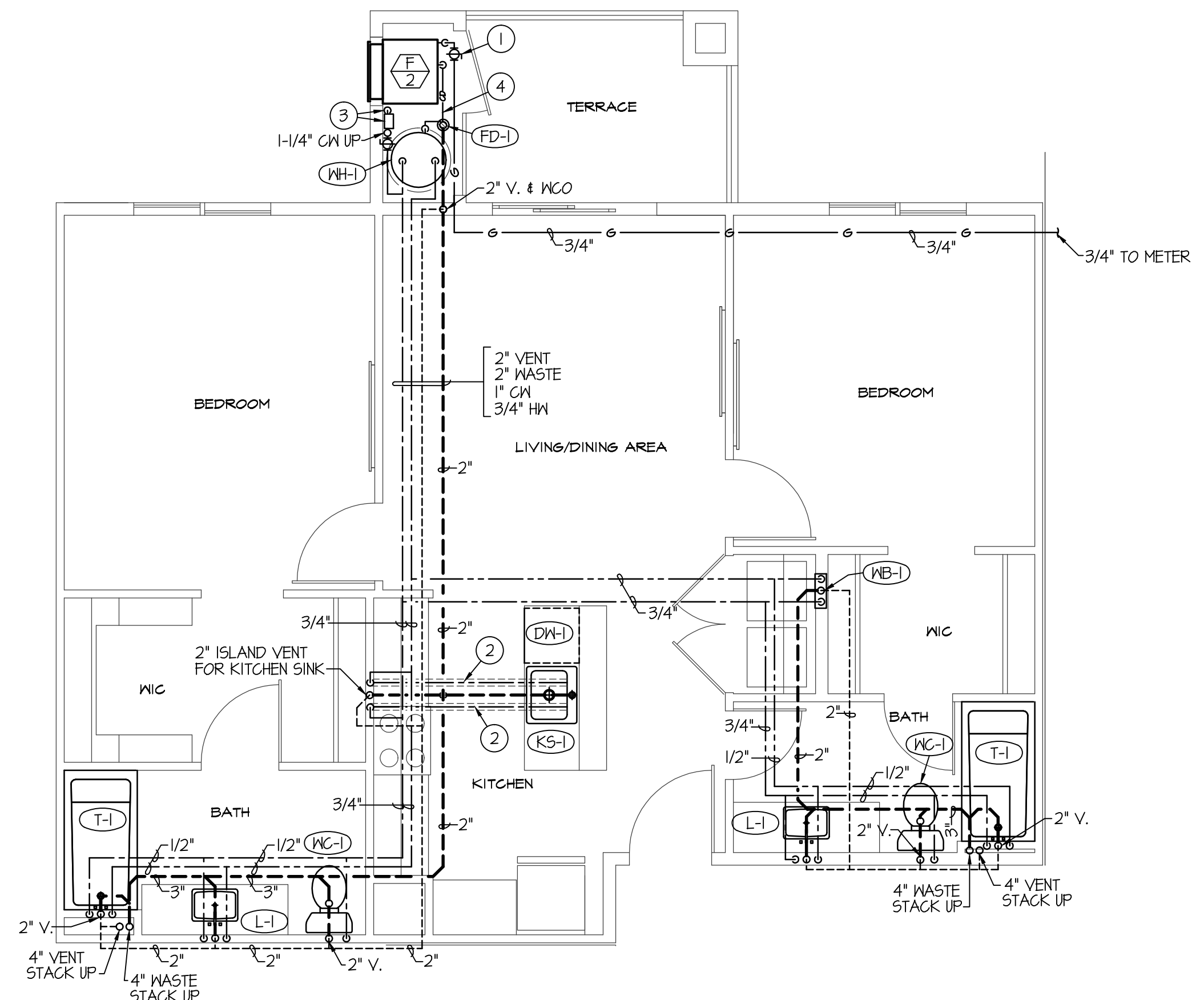
**TYPICAL 2 BEDROOM, 2 BATH LUXURY UNIT
LARGE SCALE PLUMBING FLOOR PLAN**
SCALE: 1/4" = 1'-0"



**TYPICAL 3 BEDROOM, 2 BATH UNIT
LARGE SCALE PLUMBING FLOOR PLAN**
SCALE: 1/4" = 1'-0"



**TYPICAL 1 BEDROOM, 1 BATH UNIT
LARGE SCALE PLUMBING FLOOR PLAN**
SCALE: 1/4" = 1'-0"



**TYPICAL 2 BEDROOM, 2 BATH INTERIOR UNIT
LARGE SCALE PLUMBING FLOOR PLAN**
SCALE: 1/4" = 1'-0"

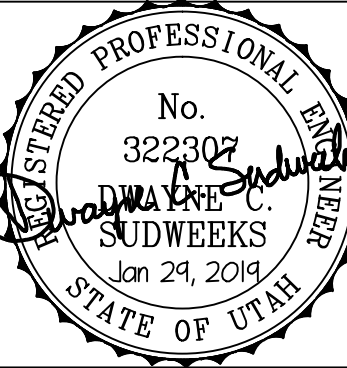
- PLAN NOTES:**
- 1 RUN 3/4" GAS LINE INTO MECH ROOM TO SERVE FURNACE COMPLETE WITH DIRT LEG, FLEXIBLE CONNECTION AND SHUT-OFF VALVE.
 - 2 RUN 3/4" HW AND COLD WATER LINES DOWN IN WALL AND UNDERSLAB TO SERVE ISLAND SINK AS SHOWN. ALL WATER PIPING UNDERSLAB SHALL BE TYPE "K" COPPER OR PEX WITH NO JOINTS ALLOWED UNDERSLAB. (PIPING SHOWN UNDERSLAB FOR MAIN LEVEL ONLY, ALL OTHER LEVELS PIPING TO BE RUN IN CEILING SPACE OF APT. BELOW AND TO BE 1/2" CW & HW).
 - 3 1-1/2" CW LINE FROM WATER RISER ASSEMBLY (SEE SHEET P101). CONTINUE ON WITH 1-1/4" CW LINE TO SERVE 2ND AND 3RD LEVELS ABOVE. REDUCE LINE TO 1" TO SERVE 3RD LEVEL FIXTURES ABOVE. EACH APARTMENT TO BE SERVED WITH 1" CW LINE COMPLETE WITH BALL TYPE SHUT-OFF VALVE IN MECH. CLOSET.
 - 4 RUN 3/4" CONDENSATE DRAIN PIPING FROM FURNACE/ DX COOLING COIL TO FLOOR DRAIN LOCATED IN MECHANICAL ROOM.
 - 5 1-1/4" CW LINE FROM WATER RISER ASSEMBLY (SEE SHEET P101). CONTINUE ON WITH 1" CW LINE TO SERVE 2ND AND 3RD LEVELS ABOVE. REDUCE LINE TO 3/4" TO SERVE 3RD LEVEL FIXTURES ABOVE. EACH APARTMENT TO BE SERVED WITH 3/4" CW LINE COMPLETE WITH BALL TYPE SHUT-OFF VALVE IN MECH. CLOSET.
 - 6 CONNECT 3/4" GAS LINE TO GAS FIRE PLACE, COMPLETE WITH SHUT-OFF VALVE, FLEXIBLE CONNECTION AND DIRT LEG.



**Engineered Systems Associates
Mechanical Engineers**
Dwayne Sudweeks
1355 East Center - Pocatello, Idaho 83201
Phone: (208) 233-0501 Fax: (208) 233-0529 email: esa@engsystems.com

**STRATA APARTMENTS
LOGAN, UTAH
LARGE SCALE APT. PLUMBING PLANS**

PROJECT: SHEET TITLE:



DRWN. BY: SR	CHK. BY: DCS
JOB NO. 18043	DATE: DEC. 2018

SHEET:
P200
OF: FOUR

F:\18043 STRATA APARTMENTS\F200.dwg Jan 24, 2018 - 8:56am